

HOLMAN

Mobile GreenWall™

GW0005

Manual

2020

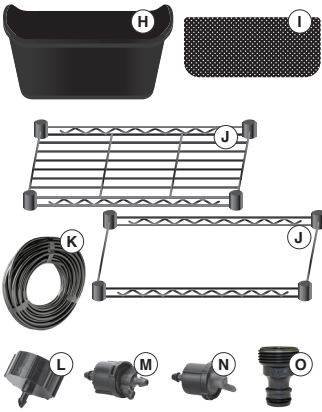
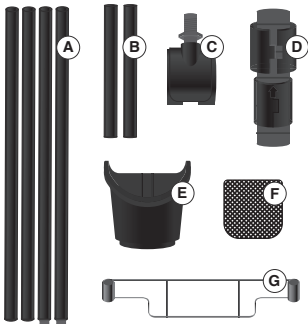
INTRODUCTION

The benefit of the *Mobile GreenWall™* is that it can be easily moved around accordingly to the amount of sunlight the different types of plants require. This has a big bearing on what will grow successfully. Also think about where your water source will be and how easily you can run a hose from that tap.

CONTENT LIST

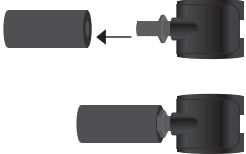
- A. 4x 470mm LONG BACK POLES
- B. 2x 80mm SHORT FRONT POLES
- C. 4x WHEELS
- D. 12x CLIPS
- E. 9x SMALL POTS
- F. 9x SMALL POT MATS
- G. 4x POT HOLDERS
- H. 2x LARGE POTS
- I. 2x LARGE POT MATS
- J. 1x WIRE FRAME (1x WITH GRATE)
- K. 1x 10m, 4mm POLY TUBE
- L. 1x 4mm DRIP FAUCET
- M. 12x INLINE DRIPPERS

- N. 1x END DRIPPER (GREEN)
- O. 1x 3/4" BSP HOSE ADAPTOR



WHEELS

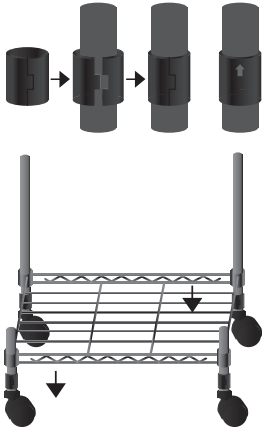
1. Locate the four base poles you will need. There are two shorts poles (80mm) for the front of the GreenWall and two long poles (470mm) for the back. These poles will have a screw hole on the bottom to place the wheels. Screw all four wheels into the base of the poles and tighten with the spanner provided



- 1 Screw the wheels with the locking switch onto the long poles (the back of the GreenWall) for easier access later

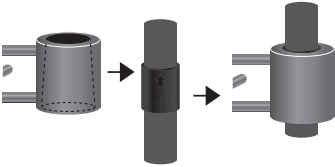
FRAME CLIPS & WIRE FRAME

1. Attach one black fame clip to the bottom of each pole, making sure the arrow is pointing upwards on both sides of the clip
2. Lock the clips into position by sliding the clip into the groove located on the end of the poles
3. Remove the plastic rings off the wire frame (with the grate) and slide over all four of the clips until secure
4. Ensure that the two longer poles are opposite each other on the long side of the wire frame



FRAME CLIPS & WIRE FRAME CONT.

5. Place additional clips on the top of each the short poles, making sure the arrows are facing upwards
6. Place clips onto the grooves of the each of the long poles so they are all level with the clips on the smaller poles
7. Place the second wire frame over the clips, ensuring the tapered end is facing the top

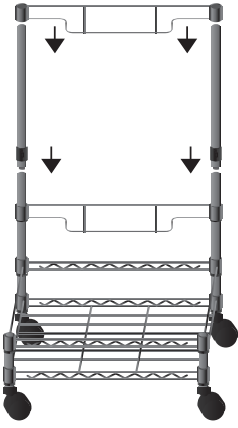


- 1 Both wire frames have tapered corners slots, make sure the tapered end (the smaller end) is facing upwards



FRAME

1. Screw the two remaining long poles with the metal thread onto the top of the long poles, now holding the wire racks. This will make the back of your GreenWall
2. Place additional clips onto the long poles for the pot holders, making sure the arrows on each clip are pointing upwards
- 1 You can decide the margin between each pot holder using different grooves. Place one pot holder over the clips before you add another set of clips. Continue this method and work your way up
3. Slide the pot holders over the clips, making sure the tapered end is facing upwards and secure to the frame



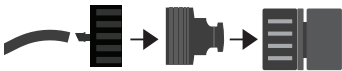
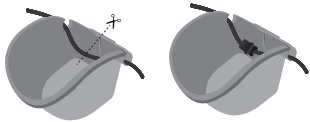
HANGING POTS

- 1 Place pot mats inside and plant the pots before clipping them onto the frame
- 1. Each pot has a flat hook on the back. This is hooked onto the pot holders to secure the pots onto the frame
- 2. Place one of the large pots with your plants in the bottom wire frame and another large pot above that onto the first pot holder. Place the small pots along the three remaining pot holders with your plants. There are three small pots to one pot holder



IRRIGATION SETUP

1. Starting from the bottom, run the poly tube through the groove at the back of the pots, working your way to the top
- 1 Leave some slack when running the tube around the pots
2. At the middle of each pot, cut the poly tube and insert an inline dripper. To continue the chain, attach the remaining poly tube to the other end of the inline dripper (ensure you are placing the dripper above each pot)
3. In the last pot, finish the poly tube with the end dripper
4. At the start of the poly tube, connect the drip faucet. This can be attached to the hose adaptor, or directly onto a tap
5. For automatic watering, connect a Holman Tap Timer to your tap and attach the other end of the garden hose or drip faucet to the Tap Timer
6. Turn on the water and test the drippers



1 YEAR REPLACEMENT GUARANTEE

1

Year

GUARANTEE

Holman offers a 1 year replacement guarantee with this product.

In Australia our goods come with guarantees that cannot be excluded under the Australian Consumer Law. You are entitled to a replacement or refund for a major failure and compensation for any other reasonably foreseeable loss or damage. You are also entitled to have the goods repaired or replaced if the goods fail to be of acceptable quality and the failure does not amount to a major failure.

As well as your statutory rights referred to above and any other rights and remedies you have under any other laws relating to your Holman product, we also provide you with a Holman guarantee.

Holman guarantees this product against defects caused by faulty workmanship and materials for 1 year domestic use from the date of purchase. During this guarantee period Holman will replace any defective product. Packaging and instructions may not be replaced unless faulty.

In the event of a product being replaced during the guarantee period, the guarantee on the replacement product will expire 1 year from the purchase date of the original product, not 1 year from the date of replacement.

To the extent permitted by law, this Holman Replacement Guarantee excludes liability for consequential loss or any other loss or damage caused to property of persons arising from any cause whatsoever. It also excludes defects caused by the product not being used in accordance with instructions, accidental damage, misuse, or being tampered with by unauthorised persons, excludes normal wear and tear and does not cover the cost of claiming under the warranty or transporting the goods to and from the place of purchase.

Should you suspect your product may be defective and need some clarification or advice please contact us directly:

1300 716 188
support@holmanindustries.com.au
11 Walters Drive, Osborne Park 6017 WA

If you are certain your product is defective and is covered by the terms of this warranty, you will need to present your defective product and your purchase receipt as proof of purchase to the place you purchased it from, where the retailer will replace the product for you on our behalf.

Thanks for being a
#SMARTGARDENER



We recommend registering your new product to ensure we have a copy of your purchase, and to activate an extended warranty. Keep up to date with relevant product information and special offers available through our newsletter.

www.holmanindustries.com.au/product-registration/

We really appreciate having you as a customer, and would like to say thank you for choosing us. Should you have any questions about this product or its operation please call customer service on 1300 716 188

HOLMAN

For the #SMARTGARDENER

Head Office/Service
11 Walters Drive, Osborne Park WA 6017
Tel: +61 8 9416 9999 Fax: +61 8 9416 9920
support@holmanindustries.com.au
www.holmanindustries.com.au

Copyright © 2020 Holman Industries