

HOLMAN



LITHIUM **ION** **BATTERY POWERED**
Retractable
Hose Reel

Instruction Manual

SKU 3230H
IS1182 REV C



Customer Service

support.holmanindustries.com.au
www.holmanindustries.com.au

RWC Reliance Worldwide
Corporation (Aust.) Pty. Ltd.

27-28 Chapman Place
Eagle Farm, QLD, Australia 4009

Please be sure to read through all the instructions
before attempting to use your hose reel.

Copyright © Reliance Worldwide Corporation (Aust.) Pty. Ltd. 2026.

Safety Warnings

- ⚠ Contents contains Lithium-ion Battery Pack (3230BAT)

Usage

- ⚠ Only use the supplied battery pack in the hose reel. Unauthorised batteries risk exploding
- ⚠ Due to the danger of physical injury, the battery pack may not be used as an energy source for other appliances
- ⚠ Protect the battery pack against heat and fire. Do not place on radiators or expose to intense sunlight for long periods. Only use and charge the battery pack in ambient temperature between 5°C and 45°C
- ⚠ The supply terminals are not to be short-circuited

Storage

- ⚠ If the appliance is to be stored unused for a long period, the battery pack and AAA batteries for Hose End Remote are to be removed
- ⚠ Store AAA batteries and battery pack in a cool, dry place, away from direct sunlight, and avoid prolonged exposure to extreme temperatures (above 45°C)
- ⚠ Do not leave the battery pack in a car or outdoor shed, these environments have the potential to exceed safe temperatures on hot days
- ⚠ Remove the battery pack from the hose housing and charge it before storing it separately
- ⚠ In regions prone to frost, stow the hose housing and the battery pack in a frost-proof place in an upright position
- ⚠ Do not store the battery pack in places with static electricity

Handling

- ⚠ Do not disassemble, crush, or puncture the battery pack: This can cause internal shorts and potential fire
- ⚠ Avoid exposing battery pack to excessive shock or vibration: This can damage the battery pack and lead to safety issues
- ⚠ Do not disassemble the hose reel housing
- ⚠ AAA batteries are to be inserted with the correct polarity



Safety Warnings

Inspection

- ⚠ Regularly check the battery pack's condition: Look for signs of swelling, bulging, leakage, or extreme heat
- ⚠ Do not use damaged batteries: If you notice any damage, stop using the battery immediately and dispose of it properly

Disposal

- ⚠ Exhausted batteries are to be removed from the appliance and safely disposed of
- ⚠ Never dispose of lithium-ion battery pack in regular household waste. Recycle them at a designated recycling centre or follow local regulations

Warning Signs

- ⚠ Extreme heat: If the battery feels extremely hot to the touch, it could be defective and at risk of fire
- ⚠ Swelling or bulging: If the battery changes shape, swells, or has any lumps or bulges, stop using it immediately
- ⚠ Leakage: If you see any fluid leaking from the battery, do not touch it and dispose of the battery properly
- ⚠ Hissing or cracking sounds can be indicators of a failing battery
- ⚠ If you notice a strange odour, discontinue use immediately

Additional Tips

- ⚠ Keep battery pack and AAA batteries away from children: This is crucial to prevent accidental damage or misuse
- ⚠ The hose reel and battery pack is not to be used by persons (including children) with reduced physical, sensory or mental capabilities, or lack of experience and knowledge, unless they have been given supervision or instruction
- ⚠ The hose reel and battery pack are not to be used as a children's play toy, with or without supervision
- ⚠ If you have any questions or concerns about lithium-ion battery pack safety, consult with a qualified professional or refer to the manufacturer's instructions



Safety Warnings

Charging

- ⚠ Rechargeable battery pack is to be removed from the appliance before being charged
- ⚠ Only SELV power supply must be used, do not attach hose reel or battery pack to any other power supply
- ⚠ For the purposes of recharging the battery pack, only use the detachable supply unit provided with this appliance
- ⚠ Only charge the battery pack using a 5V USB-C charger, with the supplied USB-C charger cable
- ⚠ Do not charge the battery pack from the DC port (which is intended to connect the battery pack to the reel)
- ⚠ Do not power the hose reel from any other power source via the DC port, the supplied battery pack should be the only power source used
- ⚠ Never charge on soft or combustible surfaces: This includes beds, couches, carpets, acids or flammable materials
- ⚠ Only use a charger provided by a reputable manufacturer, do not charge from other electronic devices such as laptops, docking stations or power banks
- ⚠ Do not overcharge: Stop charging once the device is fully charged, and avoid leaving the charger plugged in for extended periods
- ⚠ Over voltage can destroy the battery pack and the charger. Observe correct mains voltage
- ⚠ After intensive use, let the battery pack cool before charging
- ⚠ Disconnect the charging plug before storing the battery pack charger
- ⚠ The charging cable must be inspected regularly for signs of damage and aging (brittleness) and may only be used in perfect condition



Introduction

Your HOLMAN **Lithium Ion Battery Powered Retractable Hose Reel** uses a 12mm reinforced hose for added strength and durability, rated to 3,000kPa.

For your information, please read these installation instructions before using your **Retractable Hose Reel**. Please keep all instructions and refer to them when necessary.

- ⚠ Do not leave the tap on—turn tap off after use and release excess pressure before retracting back into housing

Contents

Safety Warnings	3
Introduction	6
Specifications	7
Overview	8
Battery Charging	9
Lithium Ion Battery Pack Components	9
Lithium Ion Battery Charging	9
Connecting the Battery Pack	9
Installation	10
Mounting Your Hose Reel	10
Operation	12
On-Board Display Controls	12
LED Light Status	12
Pairing the Hose-End Remote	12
Unwinding	13
Retraction from On-Board Controls	13
Retraction from Hose-End Remote	13
Protective Function	14
Storage	14
Troubleshooting	14
Warranty	15

Specifications

Battery Powered Hose Reel

Dimensions	W210 × D560 × H420
Weight	8.3kg
Controls	START and STOP for hose retraction
Battery Indicator	3-step
Motor	Geared 550 DC, brushed with 123 gear reduction ratio
Motor Power	60W
Motor Speed	12500 RPM
Motor Torque	4-6Nm
Working Current	4-6A

Lithium Ion Battery

Working Voltage	11.1V
Capacity	2,500mAh
Charge Connection	USB-C
Charge Current	600mA
Charge Time	5hr with 5V 2A charger (not included)
Run Time	40× 30m retractions from full charge
Battery System	Triple cell for extended run time and durability
Battery Indicator	4-step

Hose End Remote

Connection Frequency	RF 2460MHz
Connection Range	40m line-of-sight
Power supply	3V, 2× AAA batteries

Premium Hose

Main Length	30m
Tap-to-Reel	1.8m
Diameter	12mm
Connectors	2× 12mm snap-on
Tap Adaptors	12mm snap-on male with double o-rings to 25mm BSP female, including 20-25mm BSP reducer included
Burst Pressure	3,000kPa
Holman Kink Rating	8 out of 10
Main Material	PVC
Reinforcement	Braided

Multi Function Spray Gun

Total Functions	7
Function Types	Full, Mist, Jet, Shower, Flat, Centre, Cone
Connection	12mm snap-on, male with double o-rings

Mounting Bracket

Pin Mount	180° swivel, lockable with 6mm hole
Wall Footprint	110 × 200mm
Mounting Holes	4× 9mm
Wall Plugs	4× 11.7mm included
Coach Bolts	4× 8mm included
Masonry Bit	10mm recommended, not included
Wood Bit	7mm recommended, not included

Overview

The **Lithium Ion Battery Powered Retractable Hose Reel** can be installed and fixed on the wall of a home garden. Users can pull out the garden hose to the appropriate length (up to 30 meters) as needed for use. After use, the user can press the **START/STOP** button on the remote control or press and hold the **START** button on the **Retractable Hose Reel** to automatically retract the hose.

Components

- a. Mounting Tube
*Available as spare part (SKU: 3230PIN)**
- b. 4× Coach Bolts**
- c. 4× Wall Plugs**
- d. 180° Mounting Bracket
*Available as spare part (SKU: 3230BRKT)**
- e. 30m Garden Hose
- f. 1.8m Tap-to-Reel Hose
*Available as spare part (SKU: 3230TTRH)**
- g. Multi-Function Spray Gun
- h. Heavy Duty UV Resistant Housing
- i. 2× 12mm Snap-on Hose Connectors
- j. 20/25mm BSP Universal Tap Adaptor
- k. Hose-End Remote
*Available as spare part (SKU: 3230RBS)**
- l. On-board Controls
- m. Handle
- n. 11.1V Lithium Ion Battery Pack
*Available as spare part (SKU: 3230BAT)**
- o. 1m USB-C Charging Cable



*To order spare parts please order online: holmanindustries.com.au

**Wall plugs and coach bolts included in 3230BRKT spare part

Battery Charging

The product comes with a (2500mAH total) battery pack, which contains three 18650 lithium batteries. The lithium batteries come with a BMS protection board, and there are four battery indicator lights on the battery pack, representing the battery level from low to high from left to right

Lithium Ion Battery Pack Components

- Battery Status Lights
- DC Interface Male Cable
- Battery Indicator Button
- Type C Port
- 1m USB-C Charging Cable



Lithium Ion Battery Charging

- Press indicator button [c] to check battery level
 - Connect USB-C Cable [e] to the Type C port [d] to begin charging
 - During charging, the Battery Status Lights [a] will flash according to the current battery level
- Charging time is 4–6 hours
 - Lithium battery pack is fully charged when the four Battery Status Lights are solid green
 - When the battery pack is fully charged, it can provide 40 cycles of operation

Connecting the Battery Pack

- Open the housing located on the lower right side of the **Hose Reel**
 - Connect the interface male cable [b] to the tube roller [f]
 - Place battery pack in the battery compartment [g] and close the casing
- Close the case completely to ensure the waterproof performance of the **Hose Reel**

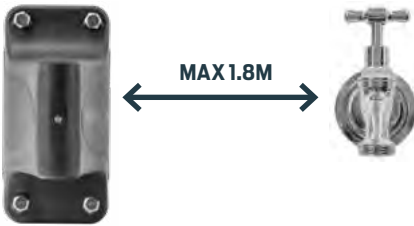


Installation

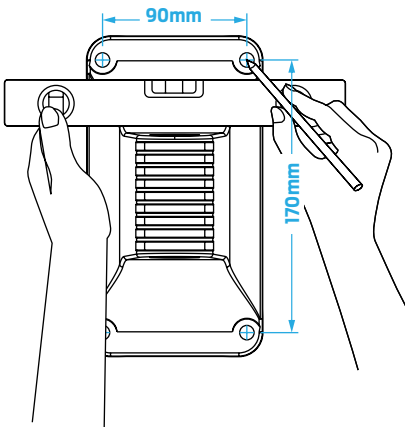
Mounting Your Hose Reel

Your **Retractable Hose Reel** should be installed nearest to your chosen water source for convenient use.

1. Check the tap-to-reel hose can reach your tap prior to installing the wall bracket



2. Place the wall bracket against either a wall or wooden post
 3. Mark inside the centre of each of the bracket holes to prepare for drilling
- i** If you are attaching your **Hose Reel** to a wooden post, you will not require the wall plugs as the coach bolts can screw directly into wood



4. Use the table below to select the correct drill bit for your **Hose Reel**

- i** If using plugs that were not included with your **Hose Reel**, drill slightly undersize as masonry materials all have different properties which will ensure the wall plugs have a secure fit

Hardware	Image	∅ Diameter
WALL PLUG (included)		11.7mm
MASONRY DRILL		10.0mm
WOOD DRILL		7.0mm
COACH BOLT (included)		8.0mm

5. Drill into the wall with a 10mm drill bit and hammer in the wall plugs [a]

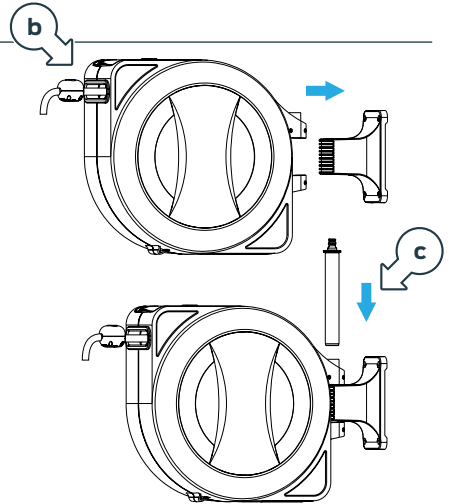
- i** The supplied wall plugs are suitable for concrete walls. For other wall types, specific wall plugs for that type of wall must be used (not supplied)



Installation

Mounting Your Hose Reel (continued)

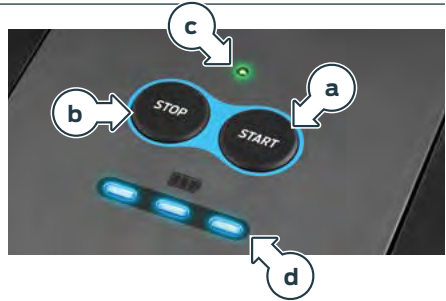
6. Place the wall bracket in position over the four wall plugs and screw each coach bolt into your wall or wooden post until all four have a secure hold on the bracket against the surface
7. Remove the mounting tube from the **Hose Reel** and slot the reel over the wall bracket [b]. Align the holes in the housing with the holes in the wall bracket
8. Insert the mounting tube [c] back into the holes on the wall bracket and housing. Then replace the securing pin in the base of the mounting tube
9. Connect your tap-to-reel hose to your garden tap



Operation

On-Board Display Controls

- a. **START** button
- b. **STOP** button
- c. Indicator Light
- d. Battery Status Lights



LED Light Status

Indicator Light: Green	Lithium Ion Hose Reel is working properly
Indicator Light: Flashing Green	Lithium battery pack needs to be charged
Indicator Light: Red	Device failure
Battery Status Lights	Represents low to high battery level from left to right
All Four Lights: Flashing	Hose Reel is in pairing mode
All Four Lights: Solid State	Hose Reel has received signal from hose-end remote

Pairing the Hose-End Remote

1. Press and hold the **STOP** button [b] on the display panel for 5 seconds
 - ❗ When all 4 lights flash simultaneously, your **Hose Reel** has entered pairing mode
2. Press the remote control **START/STOP** button [e] three times on the hose-end remote
 - ❗ The four lights will change to a solid state when the **Hose Reel** receives a signal
3. Press the **STOP** button [b] to exit pairing mode
 - ❗ The Hose-end remote has been successfully paired if the four lights turn off when you exit pairing mode



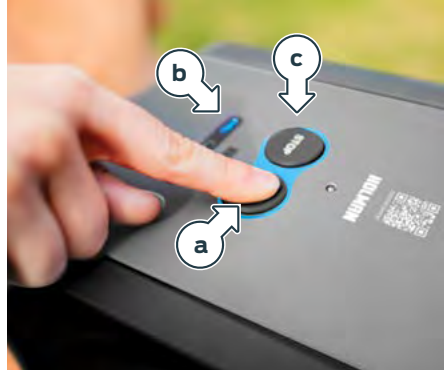
Operation

Unwinding

Pull out hose to desired length

Retraction from On-Board Controls

- i** When the battery is fully charged, the hose can be retracted 40 times
- 1. Holding the end of the hose, walk back to the hose housing and press the **START** button [a] down on the on-board display
- i** The battery status light [b] will display the current lithium battery level when the **START** button is pressed for the first time
- 2. Press the **START** button again to automatically retract the hose
- 3. Press the **STOP** button [c] when the hose has been retracted to the desired length



Retraction from Hose-End Remote

1. Holding the end of the hose, walk back to the hose housing
2. Press and hold the **START/STOP** button down [d]
- i** Wait at least 1.5 seconds for the hose to start retracting
- i** LED will flash three times when retraction begins
- i** If LED quickly flashes 6 times, it indicates batteries are low. Unscrew Hose-End Remote and replace 2× AAA batteries
3. Release **START/STOP** button once hose has been retracted to the desired length
- i** As a safety feature, if you release the **START/STOP** button during the process, the hose reel will halt the hose retraction



Operation

Protective Function

- ❗ If the hose is blocked or completely rolled up, the motor automatically switches off

Storage

- ❗ During winter months and long periods of non-use, we recommend draining all water from the unit and storing indoors to prevent weather damage

Troubleshooting

Question	Suggestion
How far can I pull out the Garden Hose?	You will find an indication sticker 1 metre before the maximum length. Do not pull the hose past this point.
How do I properly retract the Garden Hose?	When walking the garden hose back to the housing, turn off the tap, press the lever on the watering gun to release the water pressure in the hose. This makes the retraction of the garden hose a lot easier and prolongs the life of your Hose Reel.

Additional Warnings

- ⚠ Do not leave the water turned on with the hose under pressure when not in use
- ⚠ Always turn the water off and draw the water from the hose after use
- ⚠ Do not attempt to pull hose reel apart
- ⚠ Always guide the garden hose back to the housing

Warranty

3 Year Replacement Guarantee — Housing

In Australia, our goods come with guarantees that cannot be excluded under the Australian Consumer Law. You are entitled to a replacement or refund for a major failure and compensation for any other reasonably foreseeable loss or damage. You are also entitled to have the goods repaired or replaced if the goods fail to be of acceptable quality and the failure does not amount to a major failure.

In addition to the rights and remedies you have under laws relating to your Holman product, we also provide you with a Holman warranty.

Holman warrants this product against defects caused by faulty workmanship and materials for 3 years from the date of purchase. During this warranty period Holman will replace any defective product.

In the event of a product being replaced during the warranty period, the warranty on the replacement product will expire 3 years from the purchase date of the original product, not 3 years from the date of replacement.

To the extent permitted by law and without limiting the consumer guarantee, this Holman Replacement Warranty only covers products that have been put to domestic use, and excludes liability for consequential loss or any other loss or damage caused to property of persons arising from any cause whatsoever. It also excludes defects caused by the product not being used in accordance with instructions, accidental damage, misuse, or being tampered with by unauthorised persons, excludes normal wear and tear and does not cover the cost of claiming under the warranty or transporting the goods to and from the place of purchase.

Should you suspect your product may be defective and need some clarification or advice please visit our customer service page:

support.holmanindustries.com.au

10 Year Replacement Guarantee — Hose

In Australia, our goods come with guarantees that cannot be excluded under the Australian Consumer Law. You are entitled to a replacement or refund for a major failure and compensation for any other reasonably foreseeable loss or damage. You are also entitled to have the goods repaired or replaced if the goods fail to be of acceptable quality and the failure does not amount to a major failure.

In addition to the rights and remedies you have under laws relating to your Holman product, we also provide you with a Holman warranty.

Holman warrants this product against defects caused by faulty workmanship and materials for 10 years from the date of purchase. During this warranty period Holman will replace any defective product.

In the event of a product being replaced during the warranty period, the warranty on the replacement product will expire 10 years from the purchase date of the original product, not 10 years from the date of replacement.

To the extent permitted by law and without limiting the consumer guarantee, this Holman Replacement Warranty only covers products that have been put to domestic use, and excludes liability for consequential loss or any other loss or damage caused to property of persons arising from any cause whatsoever. It also excludes defects caused by the product not being used in accordance with instructions, accidental damage, misuse, or being tampered with by unauthorised persons, excludes normal wear and tear and does not cover the cost of claiming under the warranty or transporting the goods to and from the place of purchase.

If you are certain your product is defective and is covered by the terms of this warranty, you will need to present your defective product and your purchase receipt as proof of purchase to the place you purchased it from, where the retailer will replace the product for you on our behalf.



**Thanks for being a
#SMARTGARDENER**



We really appreciate having you as a customer, and would like to say thank you for choosing us.

We recommend registering your new product on our website. This will ensure we have a copy of your purchase and activate an extended warranty. Keep up to date to with relevant product information and special offers available through our newsletter.



www.holmanindustries.com.au/product-registration/

Thanks again for choosing Holman

HOLMAN

For the #SMARTGARDENER   