

HOLMAN

>> PLUMBING

2023 HOLCIVIL CATALOGUE

DWV HEAVY DUTY FITTINGS 100 - 150MM

Designed and made for Australia's tough conditions. Reducing the risk of breakage from ground movement.



DWV HEAVY DUTY

www.holmanindustries.com.au

For the #SMARTPLUMBER



THE COMPANY

Holman Industries was founded on January 4, 1966. It is still a family business and proudly Australian owned. The company is a leading supplier of plumbing fittings and watering products to the Australian market.

Holman employs over 200 staff in Australia. Head office is in Perth, Western Australia. Large distribution warehouses are located in Melbourne and Brisbane and a plumbing only warehouse is situated in Sydney. The company currently exports watering products to many countries including the USA & Europe.

Holman is dedicated to continually investing in new tooling and more product development and innovation. Holman believes in putting its customers first and offering superior service with a high level of stock support.

The aim is to be your best supplier.

QUALITY

All Holman products are certified by ApprovalMark International (AMI), an Australian based Certification Body accredited by JAS-ANZ, who provides certification to all FABFIT, T/A Holman Industries, plumbing products in accordance with WaterMark. This provides quality assurance and confidence that FABFIT T/A Holman Industries only supplies products which comply to the Australian Standards and are manufactured to the highest quality level. FABFIT, T/A Holman Industries, are a quality endorsed Company to ISO 9001 and also conducts independent batch release testing to maintain the highest level of compliance.

HEAVY DUTY DWV FITTINGS

Holman Industries Heavy Duty DWV fittings are produced in Australia, adding value to create a strong infrastructure within Civil and plumbing industry. With a 6mm wall thickness (compared to standard DWV fittings) Heavy Duty SWJ fittings are designed to help reduce and remove risks from ground movement. Featuring gussets and extra ribs under inspection openings for additional strength.

- Product Range covers from DN100 - DN150 with range of bends, junctions ,inspection openings, reducing junctions, lever invert taper
- Product ISO TYPE 5 certification
- Watermark Certified
- BEP Approved
- WSAA Appraised

Holman Industries manufacturer these fittings in Australia.





Plumbing Australia and New Zealand

📍 **Perth Headquarters**
11 Walters Drive
Osborne Park 6017
Western Australia
Tel: +61 8 9416 9999

📍 **Melbourne Hardware**
145 Northcorp Boulevard
Broadmeadows 3047
Victoria
Tel: +61 3 8335 4444

📍 **Melbourne Plumbing**
2A William Barak Boulevard
Broadmeadows 3047
Victoria
Tel: +61 3 8335 4444

📍 **Brisbane Warehouse**
1-2/68 Lisgar Street
Virginia 4014
Queensland
Tel: +61 7 3834 2100

📍 **Brisbane Hardware**
60A Clyde Gessel Place
Eagle Farm 4009
Queensland
Tel: +61 7 3834 2100

📍 **Civil Fabrication Plumbing**
4/90 Quinns Hill Road East
Stapylton 4207
Queensland
Tel: +61 7 3807 1922

📍 **Sydney Warehouse**
1/10 Johnston Crescent
Horsley Park 2175
New South Wales
Tel: +61 2 9933 6500

📍 **New Zealand Sales**
Tel: +61 8 9416 9999

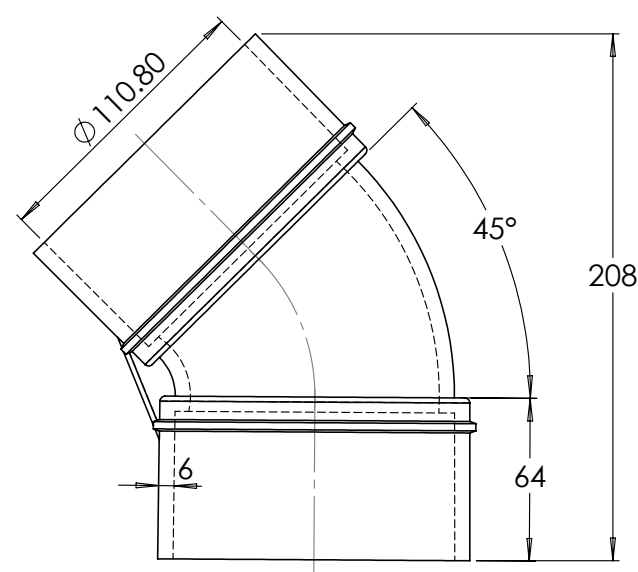
➦ **Orders, Sales and Enquires**
sales@holmanindustries.com.au
www.holmanindustries.com.au



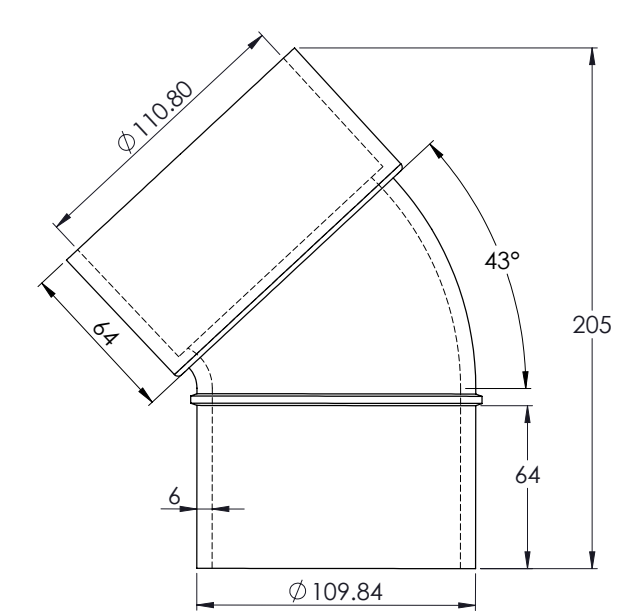
DWV 100MM BENDS

NOM SIZE	PRODUCT CODE	DESCRIPTION	CARTON QTY
DN100	HCB100X45	100mm x 45°	15
DN100	HCB100X43MF	100mm x 43° MF	16

HCB100X45



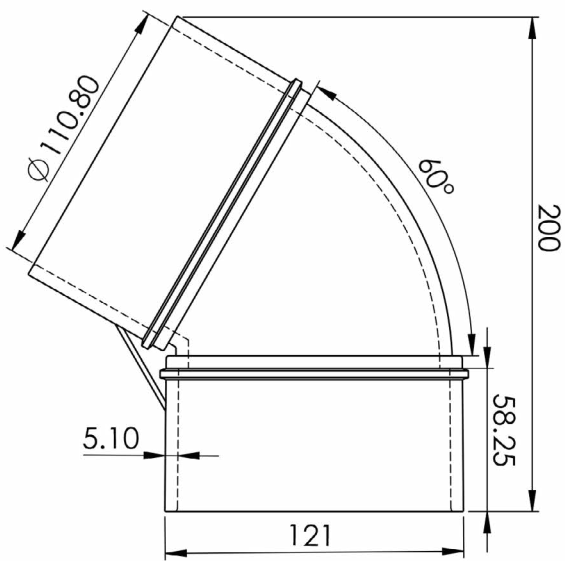
HCB100X43MF



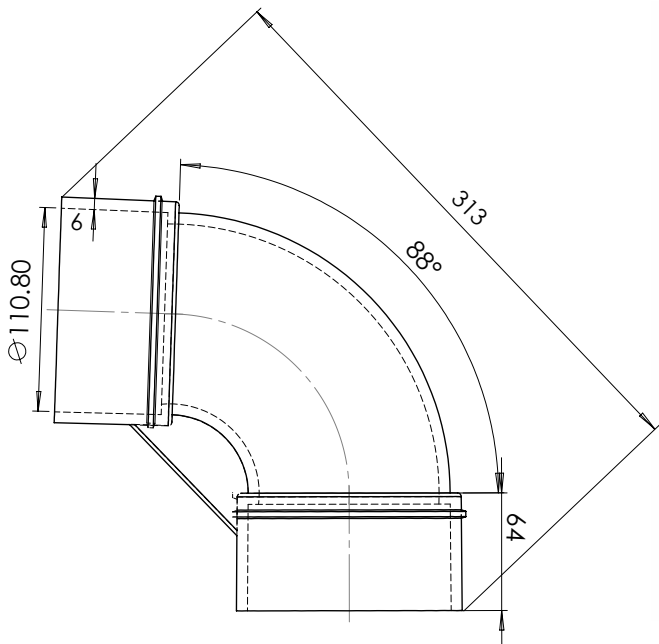
DWV 100MM BENDS

NOM SIZE	PRODUCT CODE	DESCRIPTION	CARTON QTY
DN100	HCB100X60	100mm x 60°	TBC
DN100	HCB100X88	100mm x 88°	10

HCB100X60



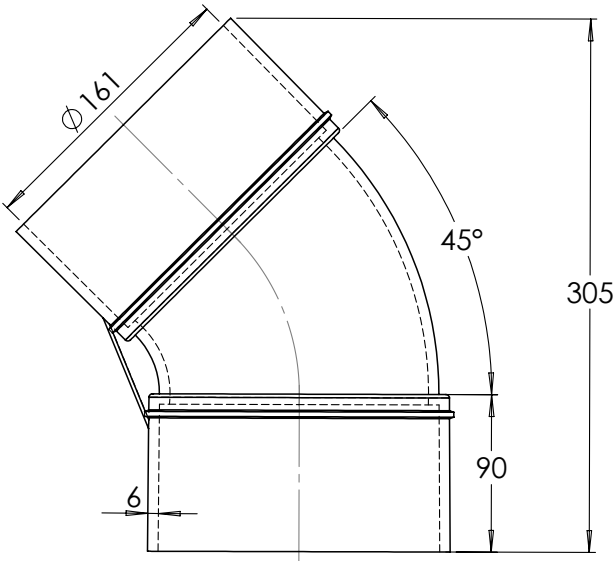
HCB100X88



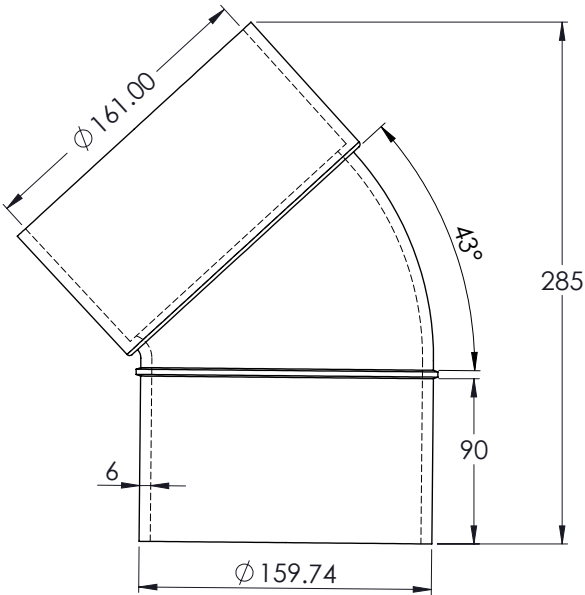
DWV 150MM BENDS

NOM SIZE	PRODUCT CODE	DESCRIPTION	CARTON QTY
DN150	HCB150X45	150mm x 45°	6
DN150	HCB150X43MF	150mm x 43° MF	8

HCB150X45



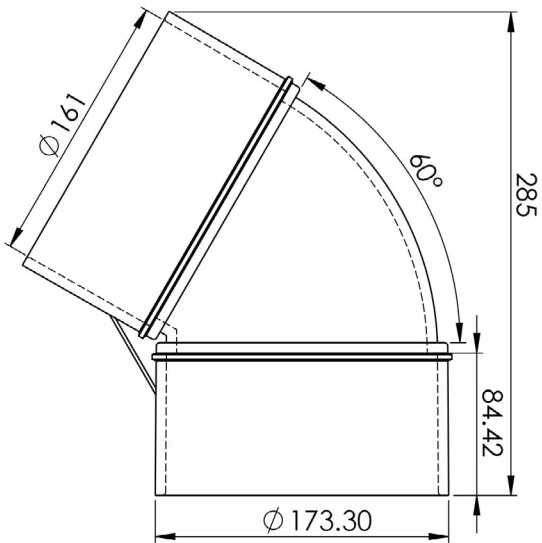
HCB150X43MF



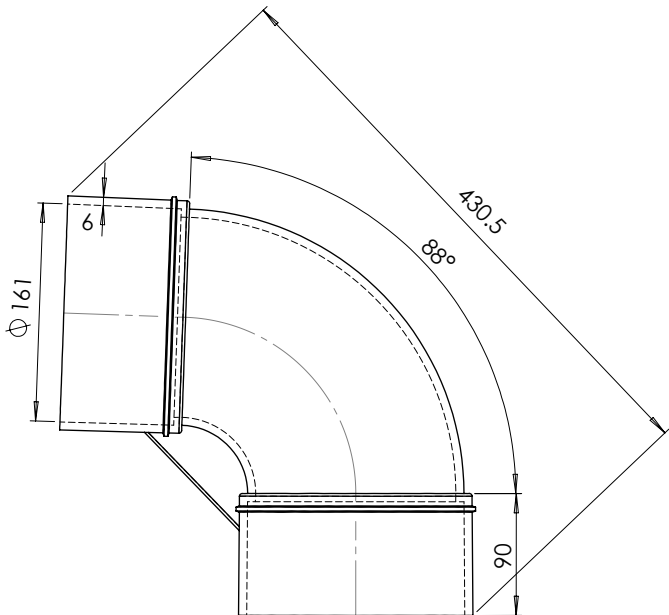
DWV 150MM BENDS

NOM SIZE	PRODUCT CODE	DESCRIPTION	CARTON QTY
DN150	HCB150X60	150mm x 60°	TBC
DN150	HCB150X88	150mm x 88°	6

HCB150X60



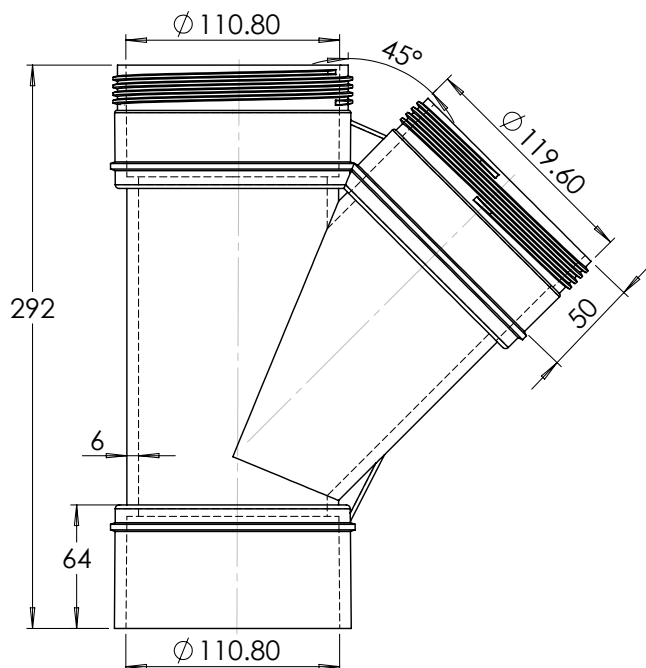
HCB150X88



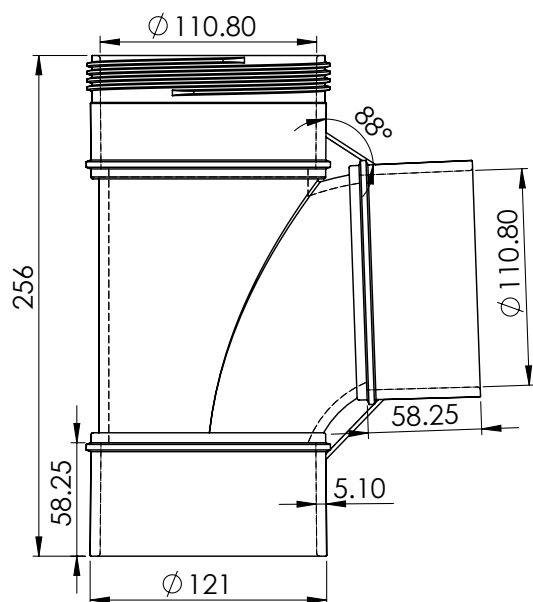
DWV 100MM JUNCTIONS

NOM SIZE	PRODUCT CODE	DESCRIPTION	CARTON QTY
DN100	HCJ100X45	100mm x 45°	10
DN100	HCJ100X88	100mm x 88°	TBC
DN100	HCJ150X88	150mm x 88°	TBC

HCJ100X45



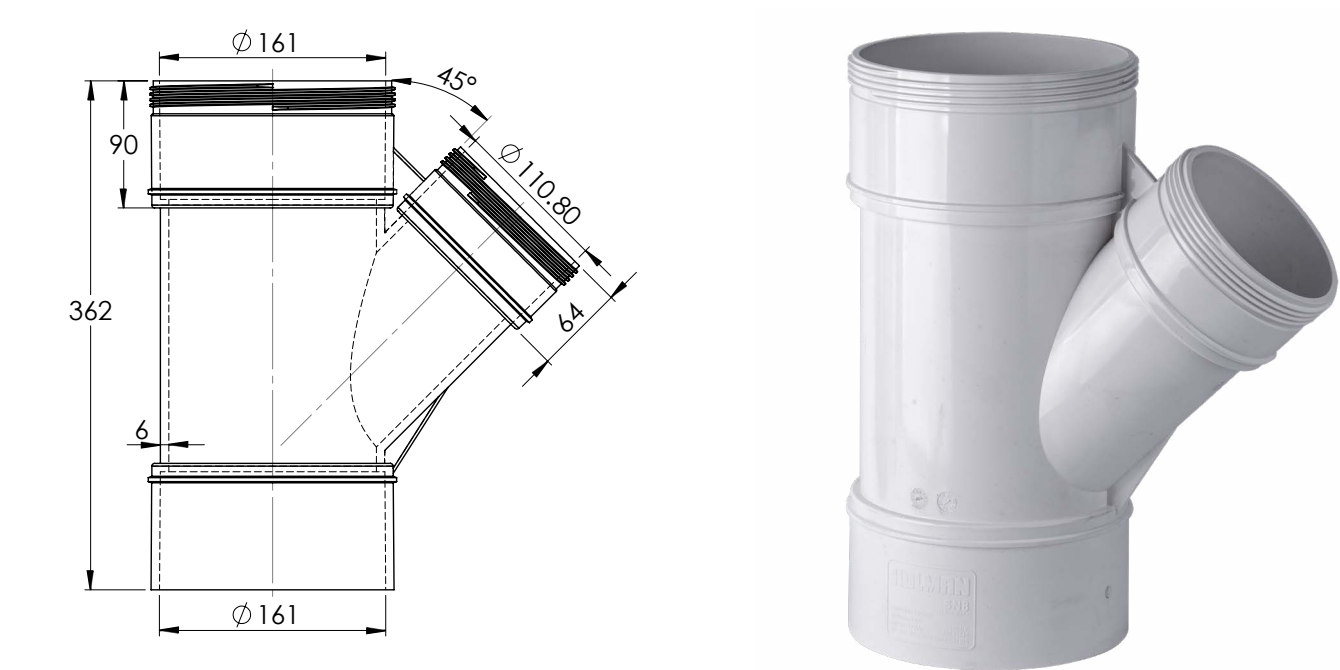
HCJ100X88



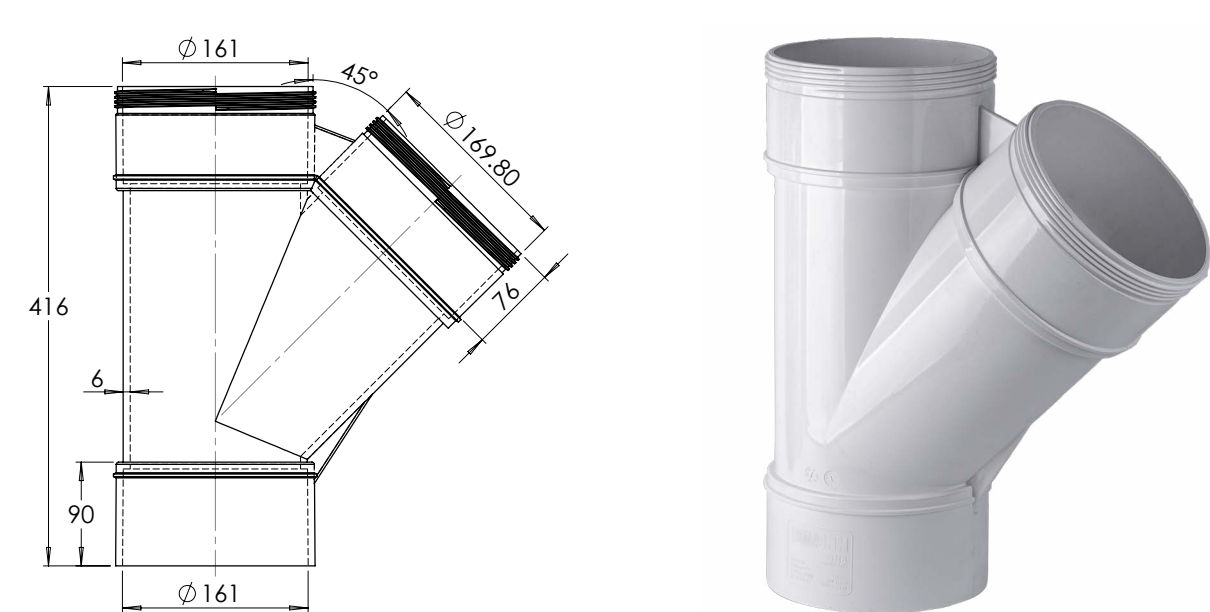
DWV 150MM JUNCTIONS

NOM SIZE	PRODUCT CODE	DESCRIPTION	CARTON QTY
DN150	HCJ150X100X45	150mm x 100mm x 45°	4
DN150	HCJ150x45	150mm x 150mm x 45°	3

HCJ150X100X45



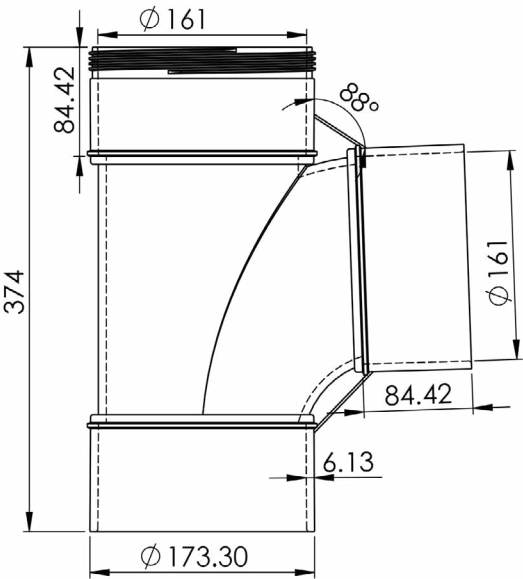
HCJ150x45



DWV 150MM JUNCTIONS

NOM SIZE	PRODUCT CODE	DESCRIPTION	CARTON QTY
DN150	HCJ150X88	150 x 88°	TBC

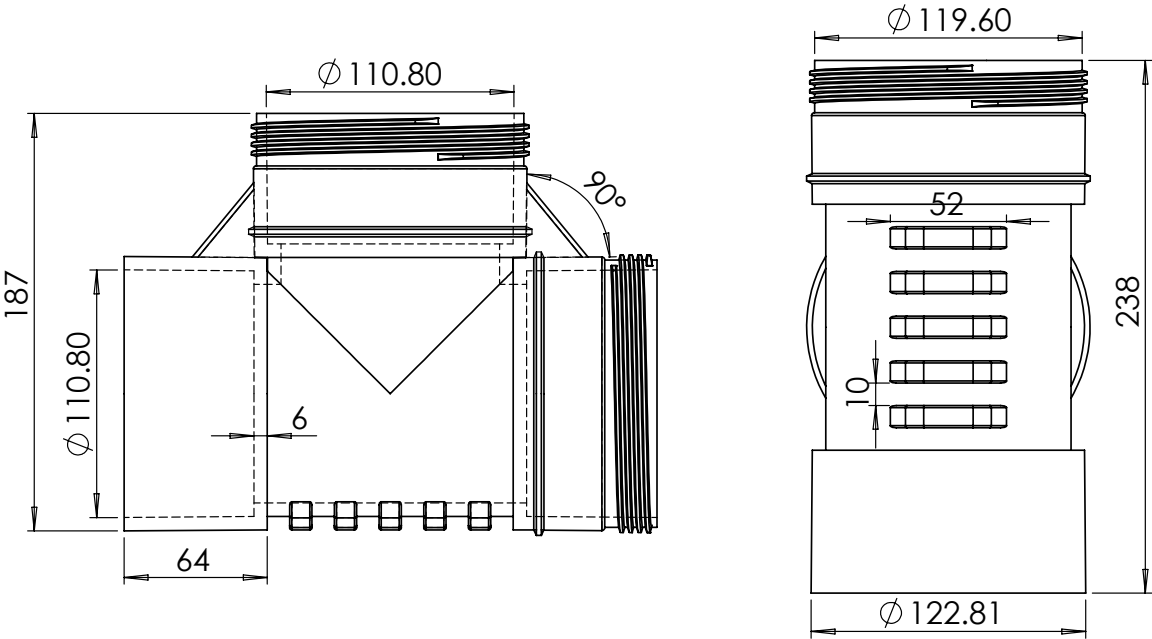
HCJ150X88



DWV INSPECTION OPENS & LIT

NOM SIZE	PRODUCT CODE	DESCRIPTION	CARTON QTY
DN100	HCIO100	100mm	10

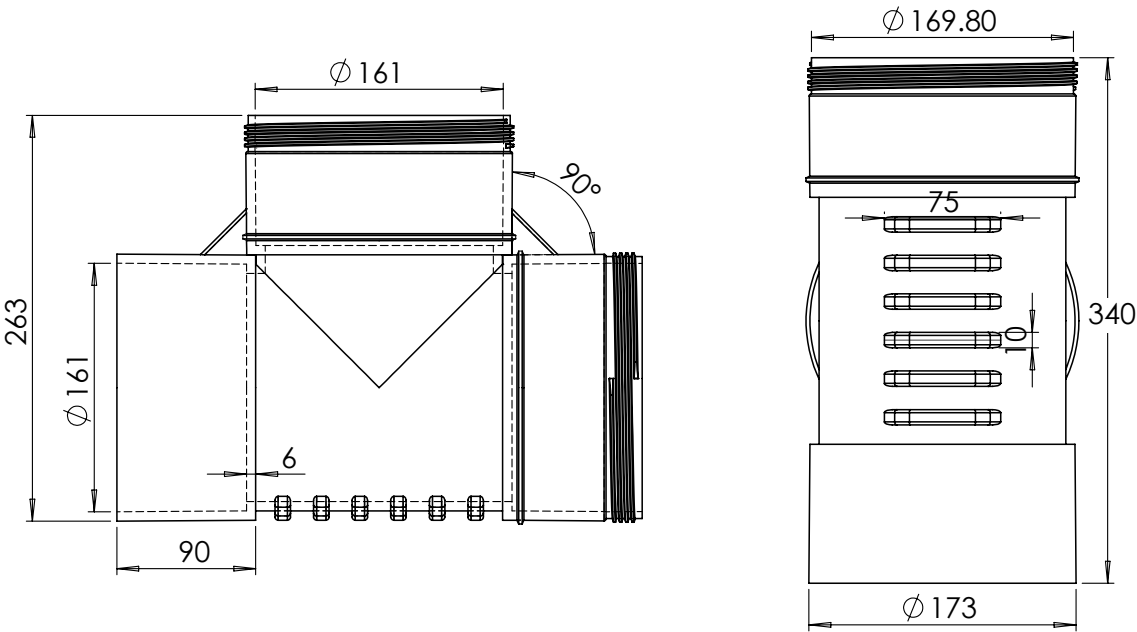
HCIO100



DWV INSPECTION OPENS & LIT

NOM SIZE	PRODUCT CODE	DESCRIPTION	CARTON QTY
DN150	HCIO150	150mm	7

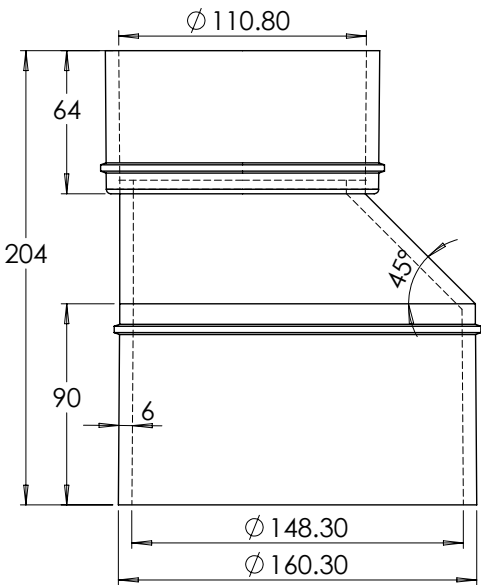
HCLIT150X100



DWV INSPECTION OPENS & LIT

NOM SIZE	PRODUCT CODE	DESCRIPTION	CARTON QTY
DN150	HCLIT150X100	150mm x 100mm	15

HCIO150



HOLMAN

>>> PLUMBING



DWV HEAVY DUTY

www.holmanindustries.com.au

For the #SMARTPLUMBER

