

# HOLMAN

## **>> PLUMBING**

### **HOLTECH CIVIL CATALOGUE**

PE100 & SDR21 SEWER NON PRESSURE

**PE RANGE**

[www.holmanindustries.com.au](http://www.holmanindustries.com.au)



## THE COMPANY

Holman Industries was founded on January 4, 1966. It is still a family business and proudly Australian owned. The company is a leading supplier of plumbing fittings and watering products to the Australian market.

Holman employs over 200 staff in Australia. Head office is in Perth, Western Australia. Large distribution warehouses are located in Melbourne and Brisbane and a plumbing only warehouse is situated in Sydney. The company currently exports watering products to many countries including the USA & Europe.

Holman is dedicated to continually investing in new tooling and more product development and innovation. Holman believes in putting its customers first and offering superior service with a high level of stock support. The aim is to be your best supplier.

## QUALITY

All Holman products are certified by ApprovalMark International (AMI), an Australian based Certification Body accredited by JAS-ANZ, who provides certification to all FABFIT, T/A Holman Industries, plumbing products in accordance with WaterMark. This provides quality assurance and confidence that FABFIT T/A Holman Industries only supplies products which comply to the Australian Standards and are manufactured to the highest quality level. FABFIT, T/A Holman Industries, are a quality endorsed Company to ISO 9001 and also conducts independent batch release testing to maintain the highest level of compliance.

## CUSTOM FABRICATIONS

The FABFIT, T/A Holman Industries, manufacturing facility has the capacity to manufacture special fittings and assemblies in all areas of HDPE (PE100), PP and PVC.

## CERTIFICATIONS & PARTEC CERTIFIED TRAINED FABRICATORS

Holman has stringent quality control programmes implemented at their manufacturing sites to ensure the quality of products supplied to our customers in the Civil Industry. Independent third party certification is undertaken by Approval Mark International JAS-ANZ Accredited.

## HOL-TECH POLYETHYLENE FITTINGS (PE100)

Polyethylene (PE100) as a choice of material for pipeline applications where the product has advantages over other material used for similar applications, difference being are the jointing method, which prevent root intrusion, and has higher impact and abrasion resistance.

Brisbane City Council (Queensland Urban Utilities) made the decision to mandate the use of PE100 pipe and fittings for their gravity sewer network in mid 2000s.

NU Sewer system implemented with QUU incorporates the use of a co-extruded PE100 pipe with a white stripped external appearance including the internal bore being of colour white/light grey which provides improved visibility with in the NU Sewer system during CCTV inspections.

Hol-Tech fittings are fabricated for use in the high visibility NU Sewer network with approved materials. Fittings comply to AS 5065 and AS 4129 methods in fabricating align to best practice

Fittings are made from PE100 - SDR21 pipe complies to AS 4130.

**Holman Industries manufacturer these fittings in Australia.**







## Plumbing Australia and New Zealand

📍 **Perth Headquarters**  
11 Walters Drive  
Osborne Park 6017  
Western Australia  
Tel: +61 8 9416 9999

📍 **Melbourne Hardware**  
145 Northcorp Boulevard  
Broadmeadows 3047  
Victoria  
Tel: +61 3 8335 4444

📍 **Melbourne Plumbing**  
2A William Barak Boulevard  
Broadmeadows 3047  
Victoria  
Tel: +61 3 8335 4444

📍 **Brisbane Warehouse**  
1-2/68 Lisgar Street  
Virginia 4014  
Queensland  
Tel: +61 7 3834 2100

📍 **Brisbane Hardware**  
60A Clyde Gessel Place  
Eagle Farm 4009  
Queensland  
Tel: +61 7 3834 2100

📍 **Civil Fabrication Plumbing**  
4/90 Quinns Hill Road East  
Stapylton 4207  
Queensland  
Tel: +61 7 3807 1922

📍 **Sydney Warehouse**  
1/10 Johnston Crescent  
Horsley Park 2175  
New South Wales  
Tel: +61 2 9933 6500

📍 **New Zealand Sales**  
Tel: +61 8 9416 9999

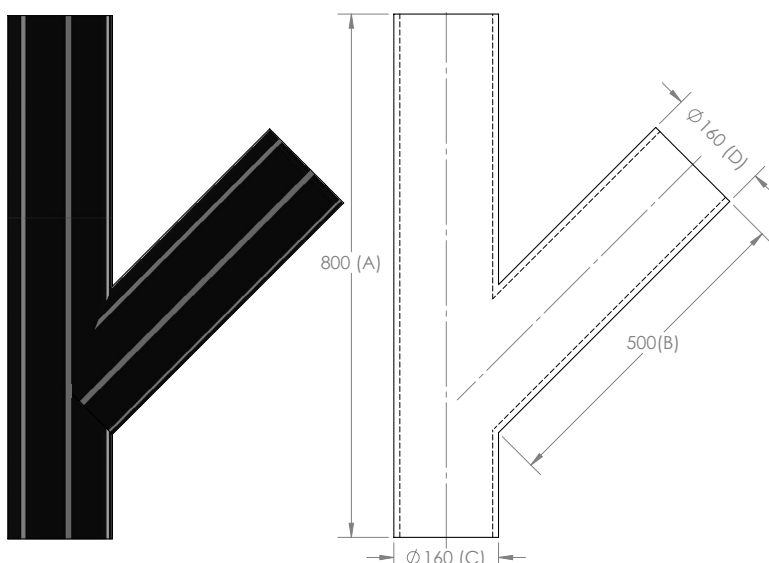
📍 **Orders, Sales and Enquires**  
[sales@holmanindustries.com.au](mailto:sales@holmanindustries.com.au)  
[www.holmanindustries.com.au](http://www.holmanindustries.com.au)



## PRODUCT INDEX

PE 45° JUNCTION	5
PE PUDDLE FLANGE	5
ADAPTOR 110 PE X 100 PVC	6
PE 160 X 110 X 88 SWEEP JUNCTION	6
PE BEND 45 DEGREE 380 RADIUS	7
PE EXT/INT 90° DROP BEND 160MM	7
PE EXT/INT BACK DROP BEND 160MM	8
PE 100 EQUAL SWEEP JUNCTION	9
PE 100 SWEEP JUNCTION TYPE C	9
PE 160 EXTERNAL 90° BACKDROP JUNCTION	10
PE EXTERNAL END CAPS	10
PE REDUCER	11
INSPECTION OPENING PE X PVC	11

## PE 45° JUNCTION

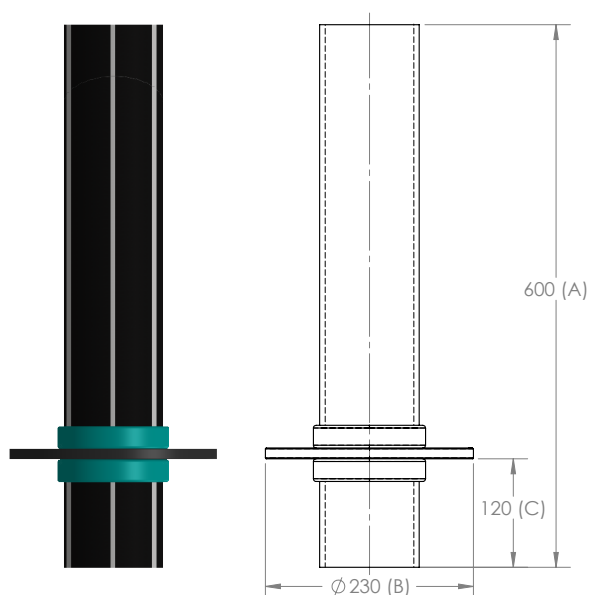


NOM SIZE	PRODUCT CODE	DIMENSION (MM)			
		A	B	C	D
45°	HTJ160X160X45	800	500	160	160
45°	HTJ160X110X45	600	510	160	110
45°	HTJ110X110X45	600	500	110	110



HTJ160X160X45

## PE PUDDLE FLANGE

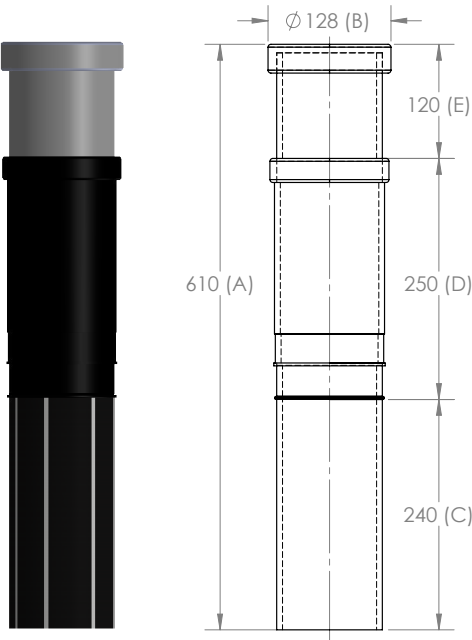


NOM SIZE	PRODUCT CODE	DIMENSION (MM)		
		A	B	C
110mm	HTPF110	600	230	120
160mm	HTPF160	600	270	120



HTPF110

ADAPTOR 110 PE X 100 PVC



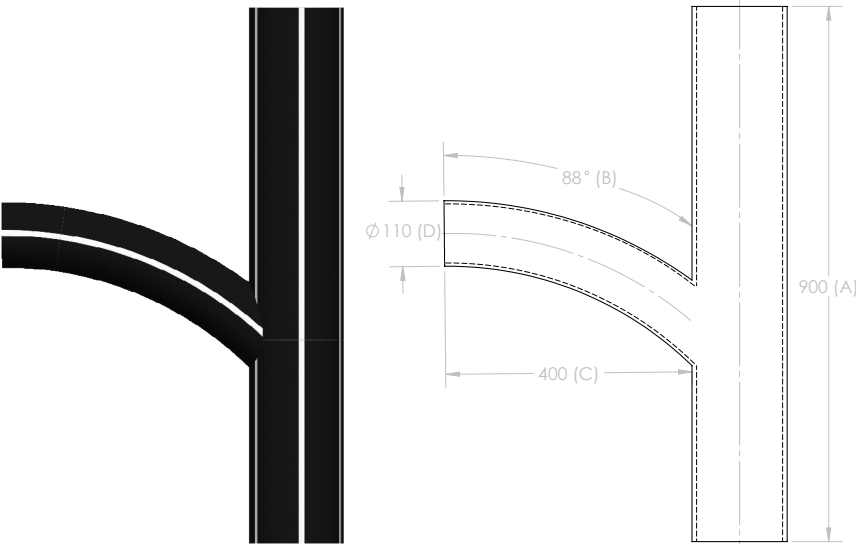
NOM SIZE	PRODUCT CODE	DIMENSION (MM)				
		A	B	C	D	E
110	HTAD110X100	610	128	240	250	120
160	HTAD160X150	678	183	220	287	171



HTAD110X100

HTAD160X150

PE 160 X 110 X 88 SWEEP JUNCTION



NOM SIZE	PRODUCT CODE	DIMENSION (MM)			
		A	B	C	D
160	HTJ160X110X88	900	88°	400	110

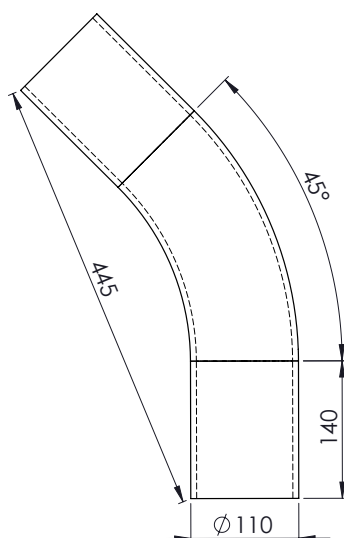


HTJ160X110X88

## PE BEND 45 DEGREE 380 RADIUS

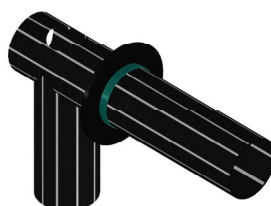


HBT110X45

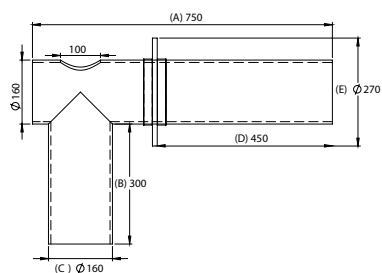


NOM SIZE	PRODUCT CODE	DIMENSION (MM)	
		A	B
110	HTB110X45	445	140

## PE 160 INTERNAL 90° BACKDROP JUNCTION

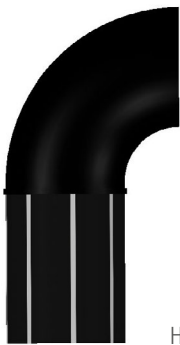


HTBDJ160X90IN

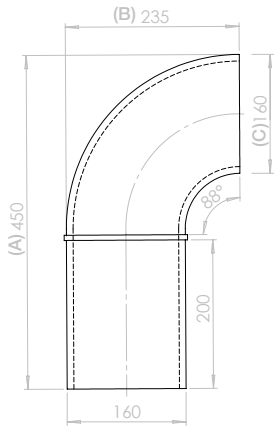


NOM SIZE	PRODUCT CODE	DIMENSION (MM)				
		A	B	C	D	E
110	HTBDJ110X90IN	600	290	110	335	250
160	HTBDJ160X90IN	750	300	160	450	270

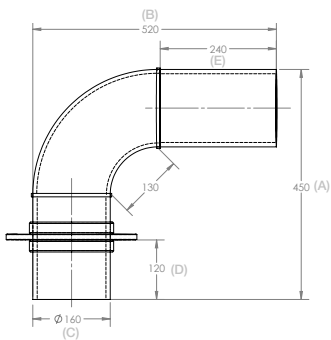
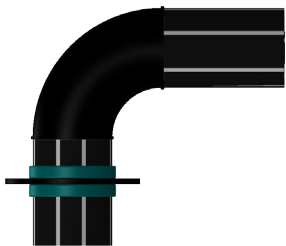
PE EXT/INT BACK DROP BEND 160MM



HTBDE160IN



NOM SIZE	PRODUCT CODE	DIMENSION (MM)		
		A	B	C
110	HTBDE110IN	385	151	110
160	HTBDE160IN	450	235	160



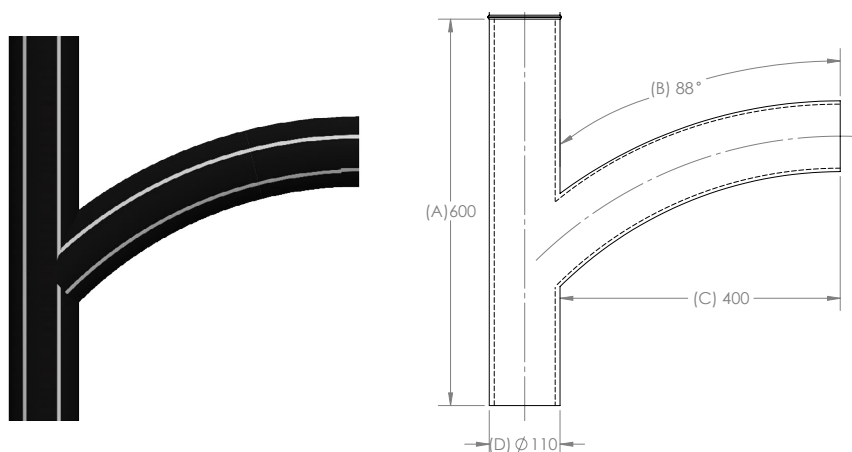
NOM SIZE	PRODUCT CODE	DIMENSION (MM)				
		A	B	C	D	E
110	HTBDE110EX	400	400	110	115	250
160	HTBDE160EX	450	520	160	120	240



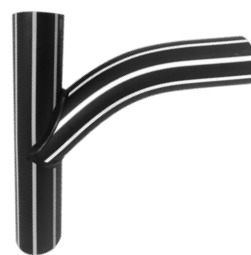
HTBDE160EX



## PE EQUAL SWEEP JUNCTION



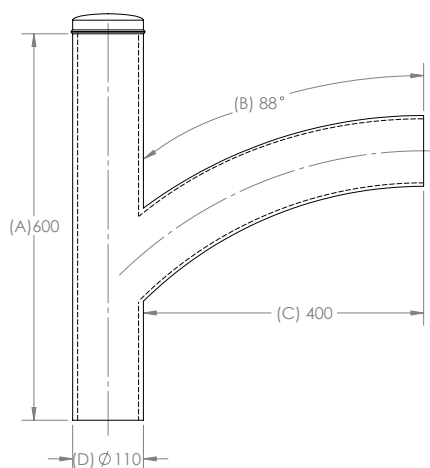
HTJ100X100X88



HTJ160X160X88

NOM SIZE	PRODUCT CODE	DIMENSION (MM)			
		A	B	C	D
110	HTJ110X110X88	600	88°	400	110
160	HTJ160X160X88	600	88°	400	160

## PE SWEEP JUNCTION TYPE C



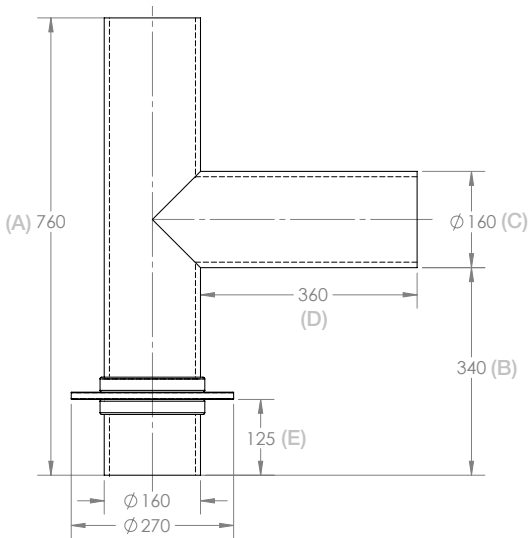
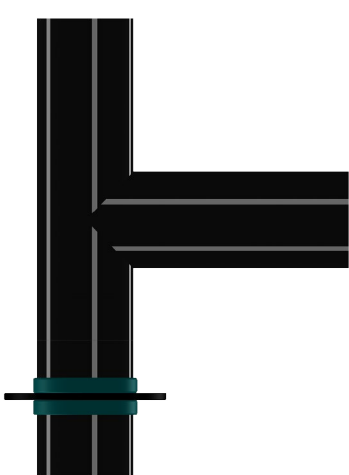
HTJC110



HTJC160

NOM SIZE	PRODUCT CODE	DIMENSION (MM)			
		A	B	C	D
110	HTJC110	600	88°	400	110
160	HTJC160	600	88°	400	160
160x110	HTJC160X110X88	600	88°	400	160X100

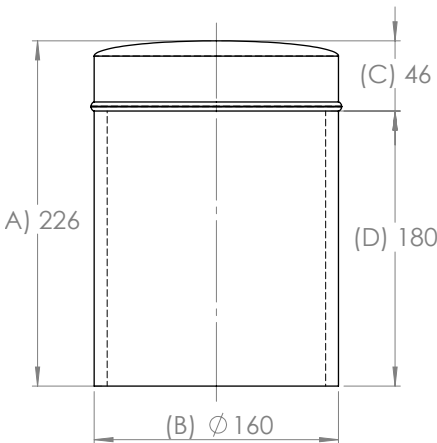
PE 160 EXTERNAL 90° BACKDROP JUNCTION



HTBDJ160X90EX

NOM SIZE	PRODUCT CODE	DIMENSION (MM)				
		A	B	C	D	E
110	HTBDJ110X90EX	600	290	110	290	120
160	HTBDJ160X90EX	760	340	160	360	125

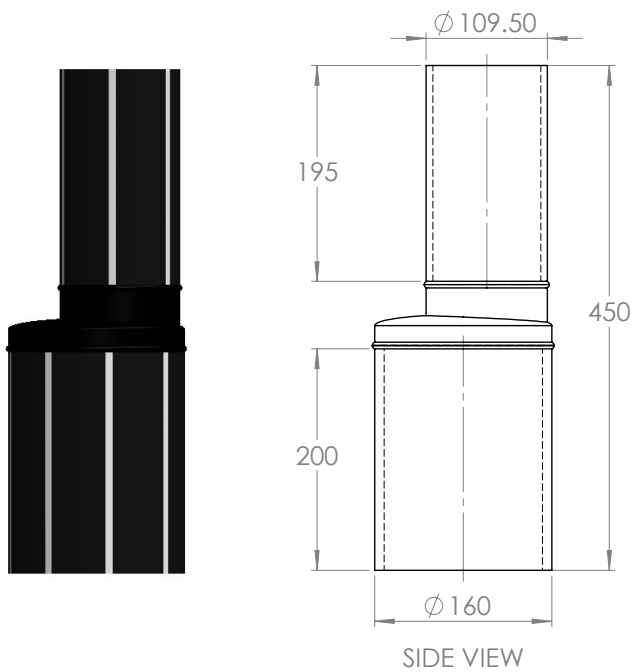
PE EXTERNAL END CAPS



SIDE VIEW

NOM SIZE	PRODUCT CODE	DIMENSION (MM)			
		A	B	C	D
110	HTCAPEXT110	226	110	46	180
160	HTCAPEXT160	226	160	46	180

# PE REDUCER



HTRED160X110

# INSPECTION OPENING PE X PVC



HTIOJ160X150

