

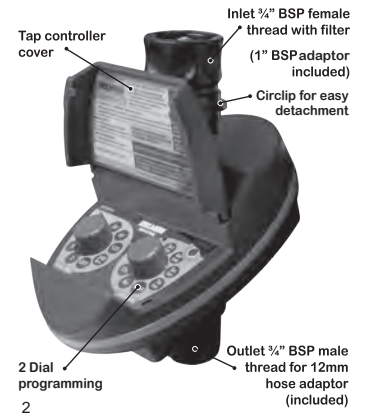


Introduction.....p1  
 Glossary.....p2  
 Battery Installation.....p3  
 Controller Installation.....p4  
 Technical Data.....p5  
**Programming**  
 Set Automatic Watering.....p6  
 Changing Start Time.....p7  
 Manual Start.....p8  
 Stop or NO Watering.....p9  
 Red LED - Operating States.....p10  
 Extra Watering Cycles.....p11  
**Fault Finding**.....p12  
 Important Tips For Installation..p13-p15  
 Notes.....p16-p17  
 Warranty.....Back Page



**CO3001 - 2 Dial Tap Timer**

Thank you for purchasing this device, please read the operating instructions carefully to familiarize yourself with the features and modes of operation before using the 2 Dial Tap Timer.



**2 year** warranty  
**CO3001** **N10372 CE**  
**INSTRUCTION MANUAL**  
 Australian Regd. Design No. 356539

**Battery Installation**

**Controller Installation**

**Technical Data**

**Set Automatic Watering**

- Hold the controller with the battery compartment facing you.
- Remove the battery compartment cover, lifting from one side.
- Connect a 9V battery to the battery connector.
- Insert the connected battery and press on the battery cover.

**NOTE:** When battery is first fitted, it takes up to 1 minute for the battery indicator to assess the battery strength.

**NOTE:** When changing the battery, make sure the battery compartment stays dry.



**USE ONLY ALKALINE BATTERIES.**

Make sure the filter (washer) is in place, then screw the tap timer to the faucet/tap by attaching the side with the female swivel hose thread connector to the tap or hose end, then turn it clockwise (hand tighten only). Connect the tap timer hose male thread side to your system.

Please also see the 'Important Tips for Installation' on pages 13 - 15, explaining how to safely connect & release your Tap Timer during installation, and for future use of the product.



**HOLMAN Professional - 2 Dial Tap Controller**  
**Product Code: CO3001.**

**Maximum Water Pressure: 800 KPa.**

**Battery:** Use a standard 9 Volt **ALKALINE** battery.

**Fluid:** Only use cold water with **NO** added chemicals.

**Frequency Options:**

Every 6 hrs, 12 hrs, 24 hrs, 48 hrs, Every 3rd Day, Every 4th Day, Every 5th Day, Every 7th Day.

**Run Time Options:**

2, 5, 10, 15, 30, 60, 120 or 240 Minutes.

**SET RUN TIME & WATERING INTERVAL**

- Turn "LEFT" dial to select RUN TIME.
  - Turn "RIGHT" dial to select INTERVAL.
  - Push "ENTER" - The Red LED will appear solid for **10 seconds** to confirm your selections, and then run.
- Watering will start in 24 hrs at the selected INTERVAL.



**Changing Start Time**

**Manual Start**

**Stop or No Watering**

**Red LED - Operating States**

**TO CHANGE THE START TIME (Minimum 6 Hours)**

- While the Red LED is solid ON, turn the "RIGHT" dial to select the DELAY time & press "ENTER" again. This moves the START time forward by the hours selected.

**RUN TIME will begin then & thereafter at selected INTERVAL.**



**SETTING THE CONTROLLER TO START MANUALLY**

- Turn "LEFT" dial to select RUN TIME.
- Turn "RIGHT" dial to MAN and press "ENTER".

**Note:** Running a manual run time will not change any program previously entered.

**Watering will begin and end at selected RUN TIME.**



**HOW TO STOP THE CONTROLLER WATERING**

- Turn "LEFT" dial to the OFF position.

**While the RUN TIME (Left) dial is in the "OFF" position NO watering will happen.**

**Note:** To re-commence automatic operation, move the "RUN TIME" dial to any other position.



**Red LED - OPERATING STATES as follows:**

- SOLID:**  
Confirms program & allows "START TIME" change.
- FLASHING - 20 Seconds:**  
"ALL IS RUNNING CORRECTLY".
- FLASHING - 1 Second:**  
"BATTERIES NEED CHANGING".

**Extra Watering Cycles**

**Fault Finding**

**Important Tip For Installation**

**Important Tip For Installation**

The manual operation mentioned previously, can be used for running an extra cycle whilst the timer is programmed.

The "Manual" cycle will run immediately after the enter button is pressed.

The timer will resume the automatic program once the manual time has elapsed.



- Ensure your tap is turned on.
- Ensure your battery is in good condition.

**USE ONLY ALKALINE BATTERIES.**

- Your program will start immediately and then in 24 hours at the frequency selected.

**Note:** When the controller is not using an automatic program, it must be in the "OFF" position.

Turn the tap "OFF" when the controller is not in use.

11

**Tap Timer - Quick Connect Circlip**

The timer features a quick connect & release mechanism.

This mechanism has been designed to help by firstly allowing you to disconnect the unit from the inlet adaptor without the need to unscrew the adaptor from the tap. Secondly the connect & release mechanism is designed to properly secure the unit to the inlet adaptor, and when installed correctly will prevent it from falling away from the tap under water pressure.

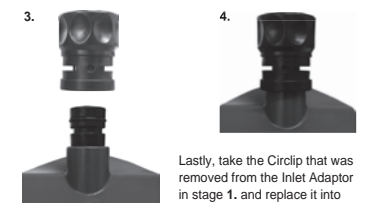
On removing the Tap Timer from the packaging it is recommended that you test to make sure that the connect & release mechanism is firmly attached. You can do this by pulling on the inlet adaptor. If it is not securely fastened and pulls away from the unit, please follow these instructions:



1. Pull the Circlip from the Inlet Apaptor, so they are separated as shown above in image 2.

13

Next take the Inlet adaptor and push it down over the Tap Timer inlet neck 3. (pushing it over the O ring tightly) so the indented marks match up as shown in image 4, below.



position on the Inlet adaptor, ensuring that it clips firmly into place. It is very important this clip is properly installed. **5. It must "CLICK" into position.** Lastly, test once again that this quick connect & release mechanism is firmly attached by pulling on the inlet adaptor.

14

**Important Tip For Installation**

**Notes**

**Notes**

**Warranty**

To remove the timer simply remove the clip and the timer releases from the tap nut. To replace please follow the instructions above.

Failure to install the Tap Timer on the tap using the correct method as described above could cause it to fall from the tap, damaging the product casing or internal electronics.



15

16



**Warranty:** We will honour all statutory guarantees that this product is of acceptable quality. (including that it is fit for purpose)

HOLMAN Industries:  
 47 Walters Drive,  
 Osborne Park, WA 6017.  
 Ph: +61 8 9204 1011  
**www.holmanindustries.com.au**



17